

ARPA PRESENTATIONS

April 13th

Wednesday Morning

9:00-9:15	Call to Order / Pledges / Welcome
9:15-9:35	Presentation #1 – Handouts - We Are ReInspire – Charise Olson, Executive Director
9:35-9:45	Q & A
9:45-10:05	Presentation #2 – Slide - Promises Community Ministry – Debbie Beeman, Director
10:05-10:15	Q & A
10:15-10:35	Presentation #3 – Chisholm Trail Outdoor Museum – David Murdoch, CEO/Chairman & Carrie Reynolds, On-Site Director
10:35-10:45	Q & A
10:45-11:05	Presentation #4 – Slide/Handouts – Center of ASD – Valerie Sims, Grant Coordinator & Lisa Boultinghouse, CEO/Founder
11:05-11:15	Q & A
11:15-11:35	Presentation #5 – Slide – Johnson County Sheriff’s Posse – Phil Williams, Treasurer
11:35-11:45	Q & A
11:45-12:00	Wrap up for lunch / Recess till 1:30

Wednesday Afternoon

12:00-1:30	Lunch
1:30-1:45	Welcome Back
1:45-2:05	Presentation #6 – Slide – Pathway – Ray Bussell, General Manager
2:05-2:15	Q & A
2:15-2:35	Presentation #7 – Slide/Handouts – Texas Health Cleburne – Ajith Pai, President & Marsha Ingle, Senior Director, Community Health Improvement
2:35-2:45	Q & A
2:45-3:05	Presentation #8 – Slide – City of Rio Vista – Kent Riker, Engineer with Provenance Engineering, Chad Wilson, Owner of ITC Services & Jeff Faraizl, Mayor of Rio Vista
3:05-3:15	Q & A
3:15-3:35	Presentation #9 – Slide – United Cooperative Services – Landy Bennett, CAO
3:35-3:45	Q & A
3:45-4:05	Presentation #10 – Handout – Crazy8 Ministries – Lisa Schwarz, Founder, CEO
4:05-4:15	Q & A
4:15-4:20	Wrap Up

APR 13 2022

January 1, 2022

To: Johnson County Commissioners' Court: Judge Roger Harmon

Tabled

American Rescue Plan Project Submission Form

Project Name: Needed Improvements at Chisholm Trail Outdoor Museum (CTOM), Cleburne.
Primary Point of Contact: Johnson County Heritage Foundation, a Non-Profit 501(c)(3) Corp. 101 Chisholm Trail, PO Box 771, Cleburne, Texas 76033 Tax ID: 27-0114146
 David Murdoch, CEO/Chairman 817 648 1486 Carrie Reynolds, On-Site Director 254 998 0261

Project Description: CTOM has seen increased Visitation over the last two years, despite COVID. We have several events in 2022 that will attract large crowds and CTOM needs improvement in infrastructure and sewage. Currently having to use PORT-A-Potties, inadequate & unsanitary and funding to promote and handle tourism. Needs exist this year and into the future.

1.) **Waste Management System Systems** (Investment in Infrastructure meets ARPA criteria)

A.) Construct of Restroom Building with sewage system to adequately handle larger crowds visiting CTOM. \$48,000. *(a)

B.) Construction of Cabins (5) each with waste management systems to accommodate tourist/visitor requests and provide operational revenue. $\$25,000 \times 5 = \$125,000$. (includes \$7500 per cabin for WMS systems.) *(b)

2.) **Signage:** (To promote economic recovery meets ARPA criteria)

A.) Electronic Marque to announce CTOM events: 5' x 20' \$50,000. *(c)

B.) Smaller, "billboard" signs placed along highway advertising CTOM. 4 @ \$1000.

3.) **Loss of Revenue** (Meets ARPA Criteria due to COVID lost revenue.

In 2020 and 2021, closed 10 weekends or 30 days 33 visitor/day @ \$8.00 each = \$8000.

4.) **Teepees:** (To promote economic recovery meets ARPA criteria) Replace Canvas and poles, 3 teepees @ 3,300 each = \$10,000. (RO)

Project Location: All projects listed will be performed on-site within the boundary of CTOM, except signage along Hwy 67 nearby directing visitors to CTOM.

Project Budget: Requires \$245,000.

Project Timeframe: With this funding, all projects can be completed within six months of receiving funds. The projects listed are urgent to handle the needs of the increasing visitors and scheduled events at CTOM. We anticipate up to 30,000+ visitors in 2022 on weekends and major events: Texas Independence Day (Mar); Santa Fe Days on the Trail (Apr); Blue Grass Festival (Apr); Pioneers Days (Nov); Cowboy Christmas (Dec)

Submitted by: David Murdoch

Carrie Reynolds

Footnotes: (a) and (b) Blueprints and specs available: (c) Estimated costs and example of another governmental agency using ARPA funds promotion tourism: (d) CTOM Factsheet

Rachel Sitler

From: Paula G. Reid
Sent: Wednesday, February 2, 2022 10:31 AM
To: Kevin Dyer; County Judge
Cc: David Murdoch
Subject: ARPA Funding Request
Attachments: Chisholm Trail.pdf

Please see the attached request for ARPA funding for the Chisholm Trail Outdoor Museum.

Thank you,

Paula Reid

Administrative Assistant to
County Judge Roger Harmon
2 N Main, RM 120
Cleburne, Texas 76033
817-556-6360



JOHNSON COUNTY COMMISSIONERS COURT

April 13, 2022, 10:15 AM

- Present Day Highway 67 was first: Animal Trail * Indian Trail * Military Road
- In 1845 with Texas Statehood this was Navarro County for nine years
- 1854 Wardville first county seat Johnson County 1854-1856
- Late 1856 county seat & courthouse moved to Buchanan
- 29 families living in Wardville
- Oldest log courthouse in Texas 1854 (1856 Moved to Buchanan)
- Returned courthouse to Wardville 2003 * Still an official courthouse
- CATTLE/Freight trail began 1864 by Black Beaver/Jessie Chisholm (Indian trader)
- 1867- 1887 Chisholm Cattle Trail Rest Stop after Civil War
- 2022 19th year for CTOM
- Importance of passing on our history to future generations

OLDEST LOG COURTHOUSE 1854 MOVED BACK HERE 2003

SILOHETTE CATTLE DRIVE BEGAN 2003 HAVE 66 SILOHETTES * PIVILLION

2005 * STAGE STATION '09 STAGECOACH BUILT 1930'S REBUILT 2010

BLACKSMITH 2009 * MULE BARN 2009 * SCHOOL 2012 * BIG BEAR 2014 *

TERRY BUILDING 2019 * Enclosed Pavilion 2020 Birdwatching Deck 2020 *

BLUEGRASS STAGE 2021

MAJOR EVENTS

MARCH 4-5 TEXAS INDEPENDENCE

*APRIL 1-3 SANTA FE DAYS ON THE TRAIL

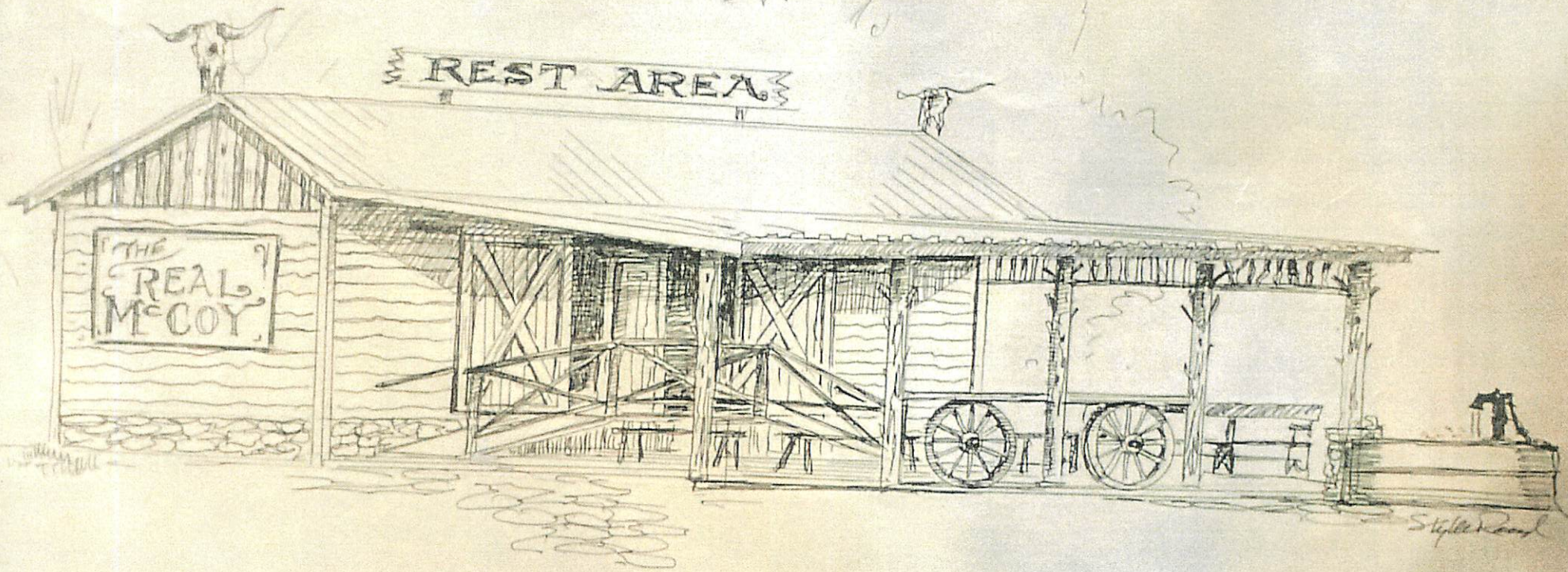
**APRIL 29-30 BLUE GRASS FESTIVAL RUSSELL MORE III TYME OUT

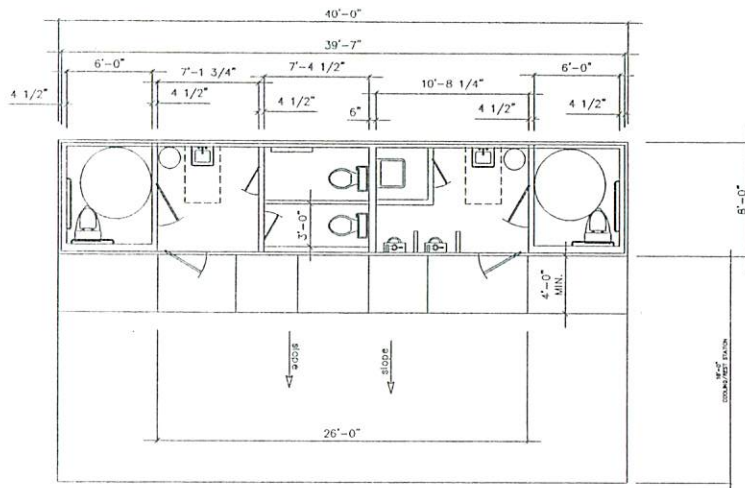
*NOV 11-12 PIONEER DAYS 19TH ANNUAL

DEC 10 & 11 COWBOY CHRISTMAS ON THE TRAIL

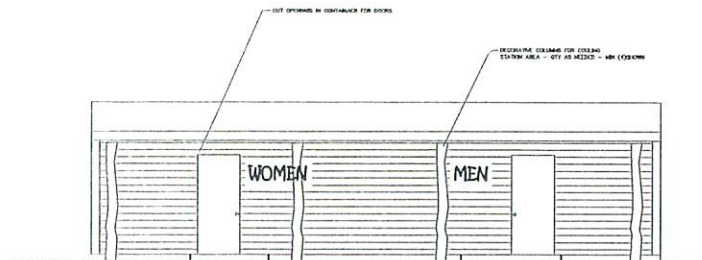
1. a. **“DESPITE COVID”
VISITORS INCREASED DUE TO EVERYTHING (SCHOOLS ETC.)
BEING SHUT DOWN.**
 - **Loss of 2 weddings, all school field trips during major events, corporate meetings/parties.**
 - b. **BATHROOMS**

We had 2 individuals/businesses pledge in January to fund the construction of bathrooms. Both dropped off after the start of construction.
 - c. **MULTIPLE ADVERTISING THROUGHOUT TEXAS, TRADE SHOW FEES, BROCHURES, SIGNAGE.**
-
2. a. **CONSTRUCTION CONTRACTORS:
RIVES CONCRETE CONSTRUCTION
ADCOCK CONSTRUCTION
DUGGER ELECTRIC
LONESTAR SEPTIC SYSTEMS
Mr. BILL’S PLUMBING**
-
3. **TEEPEE’S - SEE ATTACHED COSTS (Jan. 2022) \$3,300 each**
 4. **CABINS - SEE ATTACHED COSTS (Jan. 2022) \$25,000 each**
 5. **ELECTRONIC MARQUE SIGNS, SMALLER METAL SIGNAGE**

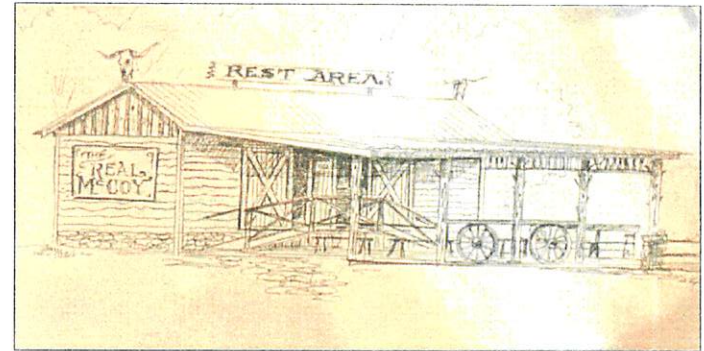




PLAN

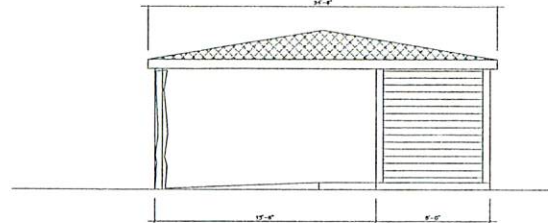


FRONT ELEVATION



ISO VIEW

Note: All steel is to be 36 ksi minimum
 All work is to be performed by qualified craftsmen.
 All work is to be coordinated with the structural, HVAC, painter's, etc. work.
 These drawings reflect the basic intent of the project, however,
 if in doubt, contact the supervisor on this project
 for verification of the required outcome.
 All components and labor shall be guaranteed for a minimum of one year.
 All work is to be in accordance with local codes and IBC
 Work area is to be maintained in a clean and safe condition.
 All framing shall be done so as to provide walls that are
 straight and true.
 All walls shall be adequately attached and braced to be stable
 Additional steel may be needed for misc. bracing
 The contractor is advised to visit the jobsite to be aware of conditions
 All dimensions are to be verified by the contractor
 All connections will be designed to develop the full strength of materials joined.
 Metal bldg procedures and specifications will be precisely followed.
 All openings in bldg shall be adequately weather tight.
 Plumbing walls are shown 6", all others are shown 4 1/2" thickness UNO.
 All bolts will be provided with nuts tightened to proper specs.



SIDE ELEVATION



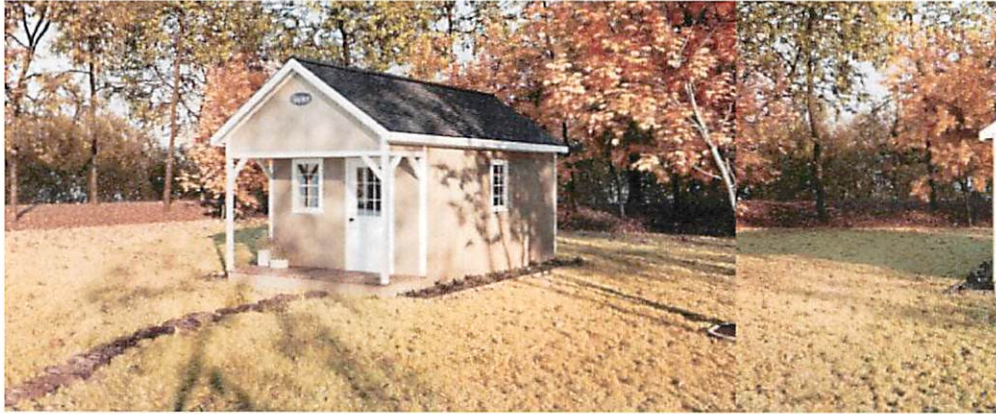
WECO Engineering Co.
 1613 E. Henderson St. Odessa, Texas 79701
 (972) 445-1100 Fax: (972) 445-1100

SCALE: 1/4" = 1'-0"	RESTROOMS Building
DRAWN: SW	DATE: 7-17-21
REVISOR: [blank]	8' X 40' PLAN
CHESSHOLM TRAIL MUSEUM	101 CHESSHOLM TRAIL
CHESSHOLM, TEXAS	HWY NO. CI-A-1



[Request Free Consultation](#)

The Retreat



Starting at **\$15,400**

★★★★★ [Read reviews from real customers](#)

[REQUEST DESIGN CONSULTATION](#)

With classic good looks and a spacious interior, The Retreat is a great choice for adding some living space to your property. Whether you need backyard guest quarters or a hunting cabin on the back forty, The Retreat is the perfect shell for you to finish out.

Select Color Options Below To See A Preview

- Roofing Select an Option ▼
- Siding Select an Option ▼
- Trim Select an Option ▼

Description Series

With classic good looks and a spacious interior, The Retreat is a great choice for adding some living space to your property. Whether you need backyard guest quarters or a hunting cabin on the back forty, The Retreat is the perfect shell for you to finish out.

The Retreat wall height ranges from 7 feet to 8 feet and the width can be 10 to 16 feet. The Retreat length spans from 10 feet to 64 feet. You can choose your siding from LP Smart Panels, Cement Lap, LP Board & Batten, Cedar Log, Cedar Lap, and Pine T&G.

Real Reviews From Real Customers

★★★★★ 2353 Reviews < >

★★★★★ 03/25/22

Delivery driver saves the day!



The delivery of my Ulrich Barn was not an easy task at all! Javier, the Delivery driver was a true Professional! I was so relieved...

[Read More](#)

K. S.

★★★★★ 06/28/16

My Cabin in Whitney



Pro Gable Cabin Shell

The craftsmanship of my Pro Gable Cabin Shell is awesome, the delivery and setup of the unit was great and to watch my delivery gu...

[Read More](#)

Adam D.

★★★★★

Love my new ofi



Fro. offi whc in C us t Rea Kri

Powered by

BE AN ULRICH INSIDER

Be the first to hear about new products and specials by becoming an Ulrich Insider. Plus, stay in the loop with helpful tips and ideas for your lifestyle needs, wants, and dreams.

SEND

[Home](#)

[Blog](#)

[Gallery](#)

[Inventory](#)



Request Free Consultation

The Garden Cottage



Starting at **\$9,000**

★★★★★ Read reviews from real customers

REQUEST DESIGN CONSULTATION

Designed specifically with an extra large eave on the long side of the building, the Garden Cottage is a popular choice. With an easy-access wrap loft, this model is as practical as it is good-looking.

The Garden Cottage wall height ranges from 6 feet to 8 feet and the width can be 6 to 16 feet. The Garden Cottage length spans from 10 feet to 28 feet. You can choose your siding from LP Smart Panels, Cement Lap, LP Board & Batten, Cedar Log, Cedar Lap, and Pine T&G.

Select Color Options Below To See A Preview

Roofing

Siding	Select an Option	▼
Trim	Select an Option	▼
Door	Select an Option	▼

Series

Select Series

Foundation & Framing Series

- Drip Edge -Included
- Felt Paper -None
- Floor Joists -2x4 – 16 in. OC
- Flooring -5/8 Plywood
- Skids -4x4
- Wall Studs -2x4 – 24 in. OC
- Trusses -2x4 – 24 in. OC

Security & Climate Series

- Shed Door Bolts -6" Barrel Bolt
- Shed Door Handle -Ulrich HD Latch and Key
- Shed Door Hinge -8" Decorative Hinge
- Residential Door Hardware -Standard Kwikset Hardware
- Shed Door Thresholds - None
- Eave Vent -None
- Hurricane Ties -None
- Ridge Vent -4"
- Roof Radiant Barrier -None
- Wall Vents -2 – 4x16

Trim Series

- Caulking -None
- Corner Trim -1x2
- Fascia -1x4
- Overhangs -4 in. on 3 sides – 6 in. front (side B)
- Roof Pitch -4.5/12 – 6.5/12

Signature Series

Foundation & Framing Series

- Drip Edge -Included
- Felt Paper -Included
- Floor Joists -2x4 – 12 in. OC
- Flooring -5/8 LP ProStruct Smart Finish
- Skids -4x6
- Wall Studs -2x4 – 16 in. OC
- Trusses -2x4 – 16 in. OC

Security & Climate Series

- Shed Door Bolts -6" Barrel Bolt
- Shed Door Handle -Ulrich HD Latch and Key
- Shed Door Hinge -12" Decorative Security Hinge w/ carriage bolt
- Residential Door Hardware -Standard Kwikset Hardware
- Shed Door Thresholds - Plain Aluminum
- Eave Vent -Continuous
- Hurricane Ties -None
- Ridge Vent -Continuous
- Roof Radiant Barrier -None
- Wall Vents -None

Trim Series

- Caulking -Included
- Corner Trim -1x4
- Fascia -1x4
- Overhangs -6 in. on 3 sides – 10 in. front (side B)
- Roof Pitch -5/12 – 7/12

Limited Series

Foundation & Framing Series

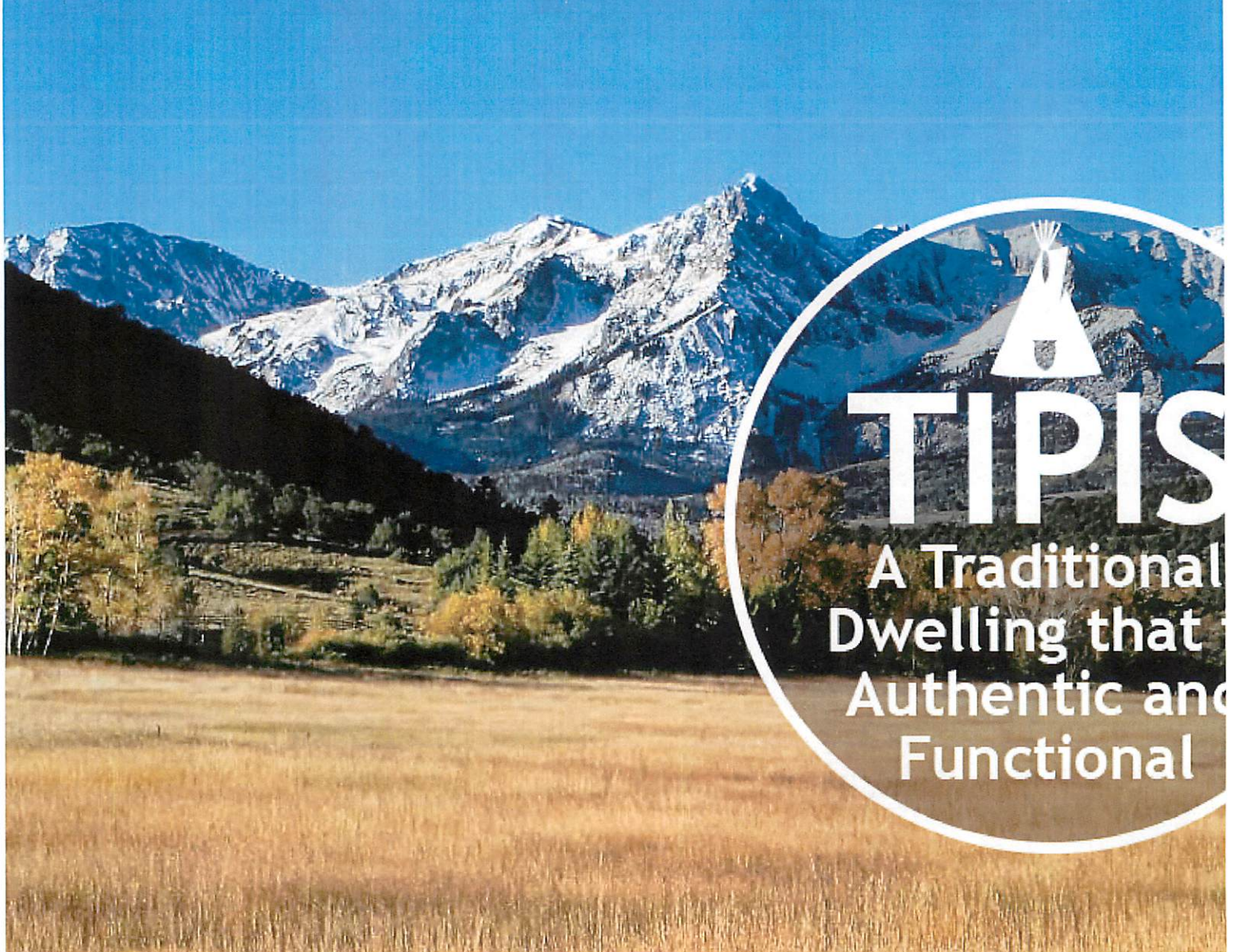
- Drip Edge -Included
- Felt Paper -Included
- Floor Joists -2x6 – 12 in. OC
- Flooring -3/4 T&G LP ProStruct Smart Finish
- Skids -4x6
- Wall Studs -2x4 – 16 in OC – Double Every 4'
- Trusses -2x6 – 16 in. OC

Security & Climate Series

- Shed Door Bolts -Chain Bolt
- Shed Door Handle -Ulrich HD Latch and Key
- Shed Door Hinge -18" HD Strap Security Hinge w/ carriage bolts
- Residential Door Hardware -Premium Schlage Bronze Hardware
- Shed Door Thresholds - Diamond Plate
- Eave Vent -Continuous
- Hurricane Ties -Included
- Ridge Vent -Continuous
- Roof Radiant Barrier - Included
- Wall Vents -None

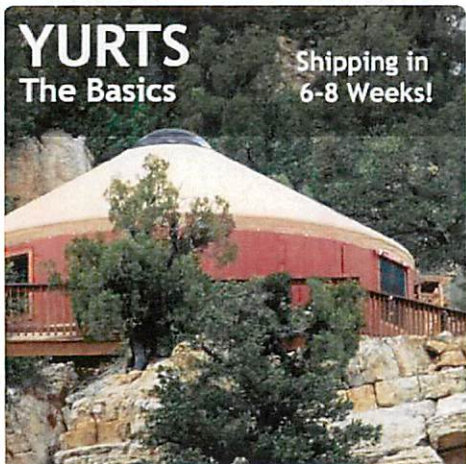
Trim Series

- Caulking -Included
- Corner Trim -1x4
- Fascia -1x6
- Overhangs -10 in. on 3 sides – 12 in. front (side B)
- Roof Pitch -5.5/12 – 8/12



TIPI'S

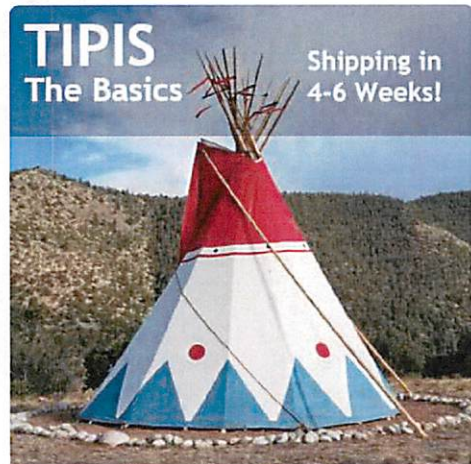
A Traditional Dwelling that is Authentic and Functional



YURTS The Basics

Shipping in
6-8 Weeks!

(/yurts/the-basics/)



TIPIS The Basics

Shipping in
4-6 Weeks!

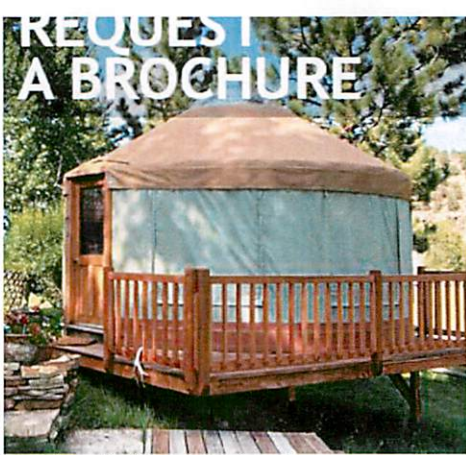
(/tipis/the-basics/)



TENTS The Basics

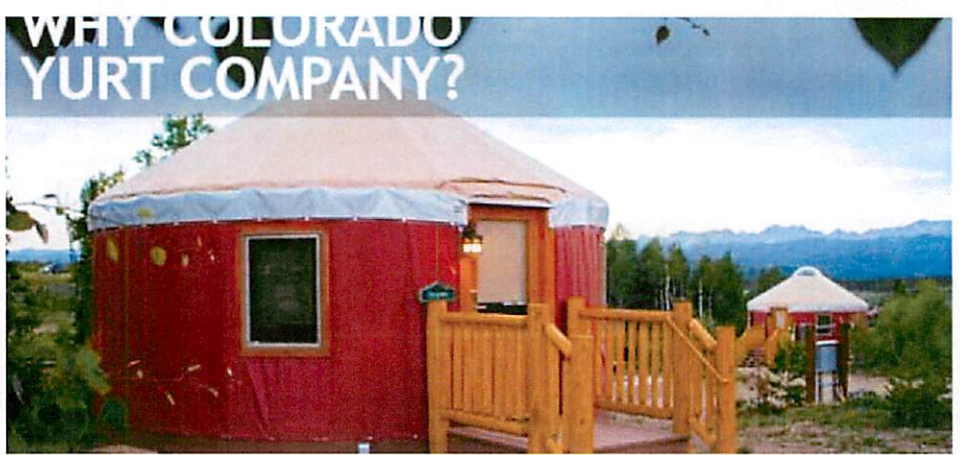
Shipping in
4-6 Weeks!

(/tents/the-basics/)



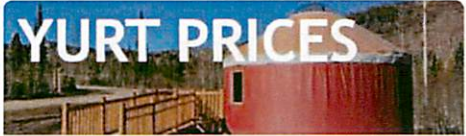
REQUEST A BROCHURE

(/main/request-a-brochure/)



WHY COLORADO YURT COMPANY?

(/yurts/quality-and-craftsmanship/)



YURT PRICES

(/yurts/price-a-yurt/)



TIPI PRICES

(<https://www.coloradoyurt.com/content/uploads/2020/12/TIPI-PRICE-LIST.20210607.pdf>)



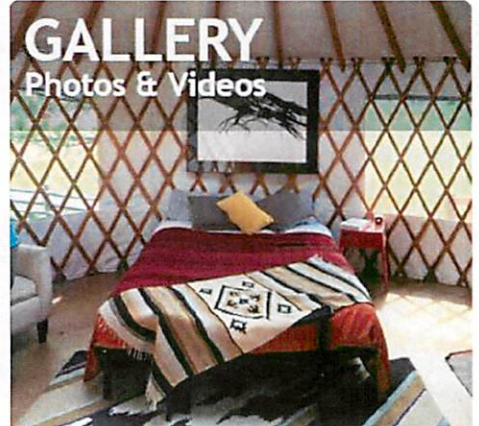
TENT PRICES

(<https://www.coloradoyurt.com/a-tent>)



BLOG

(/main/blog/)



GALLERY Photos & Videos

(/yurts/exterior-gallery/)



YURT Specs + Tech + Support

(/yurts/technical-support/)



TIPI Specs + Tech + Support

(/tipis/technical-support/)



TENT Specs + Tech + Support

(/tents/technical-support/)

TIPIS



Tap or click image for more details.

The Basics

A beautiful tilted cone with a crown of lodge poles- a Sioux style tipi is one of the world's most ingenious and functional shelters. We have added the strength and durability of modern fabrics to create the best tipis available. For over 40 years, Earthworks Tipis has been the leader in authentic, quality-built lodges.

The buffalo hunters of the Great Plains made the design innovations distinctive to "modern" tipis. First, they tilted the cone into the prevailing winds, making it slightly asymmetrical and nearly vertical in back. This made the tipi stand strong against the weather and it increased the headroom and usable living space. Second, they moved the smoke hole down the more gently sloping front of the tipi and added flaps, supported and adjusted with poles from the outside, to control the draw for the fire. These flaps give the tipi its elegant winged appearance.

The very basic elements of a tipi (teepee, tepee) are the cover, liner, ozan, poles and pitching accessories. The poles form the framework that supports the cover and provides a lattice from which the liner and ozan are hung.



CHISHOLM TRAIL OUTDOOR MUSEUM
JOHNSON COUNTY HERITAGE FOUNDATION
101 Chisholm Trail, PO Box 771 - Cleburne, TX 76033
254-998-0261 817-648-1486
501(C)(3) Non Profit Foundation Tax ID #27-0114146

IMMEDIATE NEEDS:

- 1.) FUNDING FOR STAFF / ACTIVITIES / EVENTS
*** BATHROOMS, HAND-WASHING STATIONS
- 2.) SIGNAGE - HIGHWAY/ HISTORICAL / _____
- 3.) ADVERTISING - BROCHURES
BILLBOARD
- 4.) ATTRACTIONS / UP-KEEP TEEPEE'S (3 TOTAL DAMAGED NEED REPLACED \$2,400 ea.),
COVERED WAGONS (REPAIR'S MADE \$3,000)
- 5.) MAINTENANCE - HISTORIC BUILDINGS, LIGHTING

CALENDAR OF EVENTS:

<u>ANNUAL:</u>	<u>DAYS:</u>	
<u>ATTENDANCE:</u>		
MARCH - TEXAS INDEPENDENCE DAY CELEB. 1,500-2,000+	2	
APRIL - SANTA FE DAYS ON THE TRAIL POW WOW 8,000-10,000+	3	
3,000-5,000+ - BLUEGRASS ON THE TRAIL FESTIVAL	2	
NOVEMBER- PIONEER DAYS ON THE TRAIL 6,000-8,000+	2	
DECEMBER- INDIAN MARKET ON THE TRAIL 1,500-2,000+	2	
1,200-1,500 - COWBOY CHRISTMAS ON THE TRAIL	2	
<u>MONTHLY:</u>		
THIRD WEEKEND BLUEGRASS CONCERTS 1,800+	1	
WORKSHOPS / NATIVE AMERICAN CRAFTS BLACKSMITH CLASSES 50+	1	
MARKET DAYS		
<u>WEEKLY:</u>		
DOCENT TOURS IN PERIOD COSTUMES (8 Volunteers)	3	1,344+
HORSEBACK RIDING	3	
T.B.D.		
WATER ACTIVITIES - Kayaks, Paddle Boarding, Tubing, Swimming		500+
CIVIL WAR RE-ENACTORS, WILD WEST RE-ENACTORS VISITORS 100+	3	840

ANNUAL:

CHUCKWAGON STEAK DINNERS
CHILI COOK-OFFS
CAR SHOW / HALLOWEEN TOURS
SCHOOL/CHURCH FIELD TRIP
REUNIONS/WEDDINGS/CORPORATE HOLIDAY PARTIES
CORPORATE MONTHLY MEETINGS
HISTORIANS / SPECIALS SPEAKERS

HOTELS ROOMS:

1,010 PLUS

HOLIDAY INN EXPRESS, LIBERTY HOTEL, HAMPTON INN, FAIRBRIDGE INN, DAYS INN,
SUPER 8 MOTEL, BESTWAY INN. HOTELS NOT MENTIONED PLUS OVERNIGHT CAMPING STATE
PARK. (**multiple nights, multiple days**).

(**PLUS ADD SANTA FE DAYS 10,000-13,000 FROM AROUND U.S. 5 DAYS -MULTIPLE HOTELS)

WHAT WE OFFER / ATTRACTIONS:

BIG BEAR NATIVE AMERICAN MUSEUM

TEEPEE'S

WORKING BLACKSMITH SHOP

WOODEN BRIDGE TO NATIVE AMERICAN HIKING TRAILS

RUSTIC OPEN AIR POLE BARN

HISTORIC CEMETARY

HISTORIC MULE BARN AND CORRAL

STAGECOACH STATION

1800'S JAIL

TRADING POST

OLDEST LOG COURTHOUSE IN TEXAS

ONE ROOM SCHOOL HOUSE

THE "TERRY BUILDING"

- CIVIL WAR MUSEUM

- TEXAS LAW ENFORCEMENT MUSEUM

90 FOOT BIRDWATCHING DECK - NATIONAL AUDUBON SOCIETY MEETINGS/WATCHING
WATER ACTIVITIES -

- KAYAKING, PADDLE BOARDING, TUBING, SWIMMING, FLY FISHING

"STAR PAVILION" - Climate Controlled Venue, Host Weddings, Corporate Meetings, Parties, Receptions

HORSEBACK RIDING, CARRIAGE RIDES

EVENTS - CIVIL WAR REENACTMENTS, WILD WEST REENACTMENTS,

MONTHLY WORKSHOPS, BLACKSMITH CLASSES

MONTHLY CONCERTS - BLUEGRASS (BANDS FROM TX, LOUISIANA, OK, KENTUCKY)

NATIVE AMERICAN POW WOW'S

FOOD TRUCKS / VENDORS

DEMONSTRATIONS: CANDLE MAKING, SOAP MAKING, BEE KEEPING, PAINTING, NATIVE

AMERICAN CRAFTS, METAL FORGING, GARDENING, CANNING

CHILDREN'S SCAVENGER HUNTS - ANIMAL TRACKS IDENTIFICATION

HISTORIC SPEAKERS & HISTORIANS

NOTABLES:

HOST VISITORS WORLD-WIDE

THE TEXAS BUCKET LIST

RED STEAGAL - "SOMEWHERE WEST OF WALL STREET" 3 EPISODES

RADIO, TV, NEWS PAPER PRINT - "DISCOVERY CHANNEL, RFDTV, TX BUCKET LIST, YOLO"

ACTORS - PERMANENT FROM "YELLOWSTONE" and "1883"

MAGAZINES

BLOGGERS

MOVIES

RATED #1 - TRAVELOCITY, TRIP ADVISOR, GROUPON, TOP 6 VACATION IDEAS.COM,

CULTURE TRIP, TOUR TEXAS.COM, GLUESEUM.COM, TEXAS TEJANO.COM

NATIONALLY KNOWN SPEAKERS: (GENERAL PATTON FAMILY, ROY ROGERS/DALE EVANS
FAMILY AND MANY MORE)